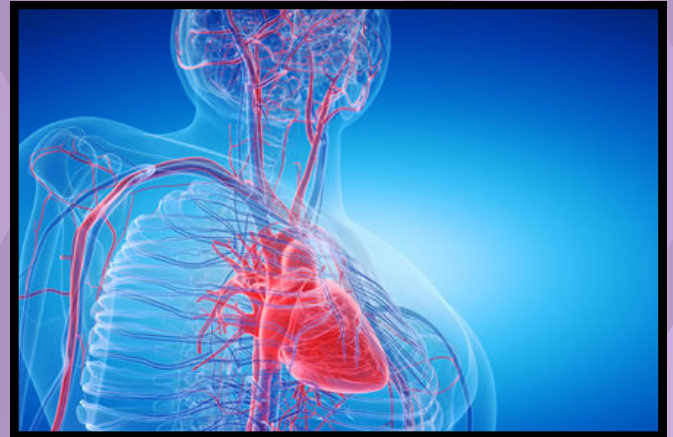


## Applied Human Biology



**Faculty:** Science

**Exam Board:** Pearson

**Course Title:** BTEC Level 3 National  
Extended Certificate in Applied Human  
Biology

**Course Content:** Everyone taking this  
qualification will study three mandatory  
units, covering the following content  
areas:

- Unit 1: Principles of Applied Human Biology (1.5hr exam Y12)
- Unit 2: Practical Microbiology and Infectious Diseases (coursework Y12)
- Unit 3: Human Biology and Health Issues (3hr assessed task Y13)
- Unit 4: Functional Physiology (or other optional coursework unit Y13)

### Online links

**Course Spec:** [BTEC Nationals | Applied Human Biology \(2018\) | Pearson qualifications](#)

### Where could this course take you?

**Enrichment opportunities:** STEM ambassador, gardening club

**Relevant University courses:** Nursing, microbiology, Anatomy and physiology, Ecology and Genetics, Occupational Health, Nursing, Midwifery, Sport Sciences

### Read, Watch and Listen

#### Listen



[The BMJ: Leading Medical Research, News, Education, Opinion](#)

For further information please contact the Sixth Form team  
([Sixthformupdates@nottinghamgirlsacademy.org](mailto:Sixthformupdates@nottinghamgirlsacademy.org)) who will be happy to  
forward your email to the relevant department.

