



NOTTINGHAM GIRLS' ACADEMY

Year 9 Options 2025/26



Dear Parent or Carer

We have reached the point in your child's secondary education, where they will have some choice over the courses they will study in years 10 and 11. The table below briefly outlines where there will be some choice around courses of study at key stage 4.

Subject	Notes
English Language	1 GCSE: No tiers of entry. No coursework. 100% exam.
English Literature	1 GCSE: No tiers of entry. No coursework. 100% exam.
Mathematics	1 GCSE: Higher and foundation tiers. 100% exam.
Triple Science	3 GCSEs: All students will study biology, chemistry and physics. In year 11 some students will switch to the combined science course if this is a more suitable pathway.
Options	Students on the EBACC pathway will select one additional option subject. Students not on the EBACC pathway will select two additional options subjects.
PE	All students will continue to take part in PE lessons.

The English Baccalaureate (EBacc)

The EBacc is made up of subjects that teach a broad range of academic knowledge and skills that are considered by higher and further education establishments and many employers as essential. A study by the University College London Institute of Education shows that studying subjects included in the EBacc, provides students with greater opportunities in further education and increases the likelihood that a pupil will stay on in full-time education. Sutton Trust research reveals that studying the EBacc can help improve a young person's performance in English and Maths.

To attain a strong pass in the EBacc, pupils must achieve a grade 5 or higher in the following GCSEs:

- English Language or English Literature
- Mathematics
- Science
- Geography or History
- A modern foreign language (Spanish at Nottingham Girls' Academy)

A standard pass can be achieved with a grade 4 or higher in each of the above subjects.

At Nottingham Girls' Academy, we are aspirational for all our students and seek every opportunity to give each and every one of our students the best possible life chances. If your child is on the EBacc pathway but you feel strongly that this is not right for them, you must put this in writing to me at jmora@nottinghamgirlsacademy.org

Science Pathways

All students will work towards achieving separate GCSEs in biology, physics & chemistry. This is called the triple science pathway. This is because it gives students the best opportunity to succeed in each science subject and opens up even more STEM (science technology, engineering & maths) pathways in the future. This will be reviewed in year 11 and some students will move onto a combined science pathway if this is more appropriate for them.

Options

In the table below are the subjects that students will choose from in addition to their core subjects. When considering what to choose, students might consider what they want to do after their GCSEs and which subject might help them with that pathway. If students do not know what they want to do in future, they should consider what their strengths and skills are and what they enjoy. They are much more likely to succeed if they choose a subject they enjoy.

Options	
Child Development	Religious Studies
Dance	Computer Science
Spanish	Art
Performing Arts	Sociology
Geography	Sport Science
History	Enterprise & Marketing
Media Studies	

We may be unable to run a course if an insufficient number of students choose it. For this reason we ask that students indicate a first choice and a reserve option on the options form which will be sent as a Microsoft Forms link on the date below. Students MUST be happy to study their reserve choice, so please ensure this is selected carefully.

Key dates:

Parents' and Options Evening: 25 February
Options form emailed to parents: 27 February
Option form return deadline: 6 March

Yours faithfully

Jo Mora
Deputy Principal
Quality of Education



English

SUBJECT LEADER: Ms Simpson
EXAM BOARD: AQA
SPECIFICATION LINK: <https://www.aqa.org.uk/subjects/english/gcse>

GCSE English Language and GCSE English Literature: Core Qualifications.

In Years 10 and 11, our pupils study for separate awards in English Language and in English Literature.

Each award is assessed via two examination papers, a total of four exams, which make up 100% of the two GCSEs in English.

Spoken Language is a separate module, assessed via a short speech on a given subject. Spoken Language does not 'count' towards our girls' final GCSE grades in English. This certification is assessed using the Pass, Merit and Distinction model.

What you will study in GCSE English Literature and GCSE Language.

English Literature: pupils will study pre and post 1914 Literature, including a Shakespearean play, post 1945 drama, a range of poetry and the C19th novella. English Literature is a closed book examination.

English Language: pupils will explore unseen sources, both fiction and non-fiction; they will read, retrieve, summarise, analyse texts and engage with different forms of creative writing. Creative writing is a heavily weighted element of the English Language award.

How you will be assessed in English

English Literature: 8702

Paper 1: Shakespeare and the C19th Novel: two essays. 1hr 45mins / 64 marks.

Paper 2: Modern Drama and Poetry: one essay on drama, one comparative poetry essay, two shorter answer tasks on unseen poetry. 2hrs 15mins / 96 marks.

English Language: 8700

Paper 1. Explorations in Creative Reading and Writing. 1hr 45 mins / 80 marks.

Section A is made up of four questions, worth 4 to 20 marks. Reading, retrieving and analysing one unseen fictional source. 40 marks. Section B requires one creative writing task, either a description or a short story. 40 marks.

Paper 2. Writers' Viewpoints and Perspectives. 1hr 45 mins / 80 marks.

Section A is made up of four questions, worth 4 -16 marks, based on two unseen non-fiction sources, one of which will be taken from the C19th. 40 marks.

Section B requires one creative writing response; argue, persuade, explain. 40 marks.

Your Future

Skills

The study of GCSE Language and GCSE Literature encourages debate, hones one's ability to write a well rounded, insightful and convincing argument; English also taps into the creativity of our pupils.

Typical careers for graduates of English Literature might include teaching, university professor, journalist, reporter or working in PR and the media. Many graduates of English are also excellent writers - maybe you could become an author?

English Language graduates may also teach or veer towards socio-linguistics or the psychology of language study.

Career

Study

ADDITIONAL INFORMATION:

English Literature past papers and mark schemes: <https://www.aqa.org.uk/subjects/english/gcse/english-literature-8702/assessment-resources>

English Language past papers and mark schemes: <https://www.aqa.org.uk/subjects/english/gcse/english-language-8700/assessment-resources>

Mathematics

SUBJECT LEADER: Ms Clark

EXAM BOARD: OCR

SPECIFICATION LINK: <https://www.ocr.org.uk/qualifications/gcse/mathematics-j560-from-2015/specification-at-a-glance/>

Why do we need to study Mathematics?

Mathematics is for everyone. It is diverse, engaging and essential in equipping students with the right skills to reach their future destination, whatever that may be.

Mathematics should encourage students to develop confidence in, and a positive attitude towards, mathematics and to recognise the importance of mathematics in their own lives and to society.

What you will study in Mathematics:

- Number
- Algebra
- Ratio, proportion and rates of change
- Geometry and measures
- Probability and Statistics

Within each of these areas students will need to be able to recall, select and apply mathematical formulae to solve problems and apply mathematical techniques to multi-step functional problems.

Students will also work towards a GCSE in statistics. This is taught within the maths curriculum. After the mock examinations, students will be supported to decide whether this is a suitable pathway for them.

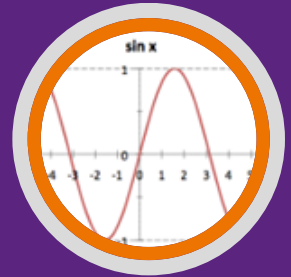
How you will be assessed in Mathematics

Mathematics is assessed using examinations only. You will have three exams, each of which is 1½hrs long.

Papers 1 and 3 are calculator papers. Paper 2 is a non-calculator paper.

Mathematics is split into two levels:

- Foundation covers grades 1 to 5
- Higher covers grades 4 to 9



1

Your Future

Skills	Career	Study
Problem solving	Accountant	Mathematics A level Further Maths A level Physics & Science A Level Statistics A level Core Mathematics
Critical thinking	Aerospace/civil engineer	
Communication	Architect	
Team work	Teacher	
Perseverance	Economist	
Analytical thinking	Financial analyst	

ADDITIONAL INFORMATION:

You will need to use a scientific calculator (we recommend using Casio shown in the picture)



fx-85GT CW

Science

SUBJECT LEADER: Miss Green
EXAM BOARD: AQA
SPECIFICATION LINK: <https://www.aqa.org.uk/subjects/science/gcse>

Why study
science?

Science will open up a whole world of scientific careers, including medicine, dentistry, pharmacy and nursing. See the science staff for more details.



What you will study in Science:

There are 10 chemistry units: including atomic structure, periodic table, organic chemistry and chemistry of the atmosphere.

The 7 biology units are: cell biology, organisation, immune system, bioenergetics, homeostasis, inheritance & evolution, and ecology.

The 7 physics units include forces, energy, waves, electricity, electromagnetism and atomic structure.

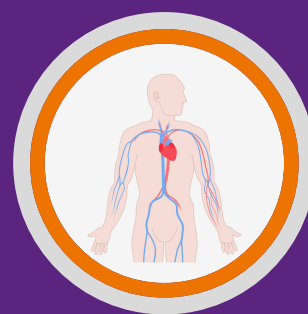
There are compulsory practical skills which are tested in the final exams.

All routes are linear, with examinations taken at the end of the course. Students will be entered for higher or foundation tier, whichever will maximise their grade.

How you will be assessed in Science

In the 3 single (triple) sciences you will get 3 separate GCSE grades based on the average of the 2 papers in each subject.

In combined (double) science you will get 2 GCSE grades. The grades will be an average calculated from the 6 exam papers, eg 5-5, 7-6, 4-3.



Your Future

Chemistry

The study of the history of the periodic table and the developments in science relating to chemical reactions and substances that are essential in everyday life, whether in cosmetics, pharmaceuticals or computer parts. Examples include production of, reactions of and uses of oil, plastics, gases in the air, metals rocks.

Biology

The study of living things and the environment, divided into many specialised fields that cover their morphology, physiology, anatomy, behaviour, origin and distribution. humans and their interactions with their surroundings and their impacts on the planet, are studied in great detail.

Physics

The study of the non-living world and its effects, the study of the laws of nature. Its principles underlie all the sciences, such as astronomy, biology, chemistry and geology and ultimately, every subject/activity known to man. Everything you study in physics is relevant to your life and the world around you.

Careers

Pharmacy, medicine, forensics, biotechnology, cosmetics, teaching, law and many, many more.

Sports scientist, ecologist, dentist, GP, nurse, surgeon, midwife, forensics, physiotherapist, teaching and many, many more.

Meteorologist, lab technician, mechanic, nuclear physicist, architect, teaching, aerospace, engineering and many, many more.

What has SCIENCE done for you lately?

Plenty. If you think science doesn't matter much to you, think again. Science affects us all, every day of the year, from the moment we wake up, all day long, and through the night. Your digital alarm clock, the weather report, the road you drive on, the bus you ride in, your decision to eat a baked potato instead of chips, your mobile phone, the antibiotics that treat your sore throat, the clean water that comes from your taps and the light that you turn off at the end of the day have all been brought to you courtesy of science. The modern world would not be modern at all without the understandings and technology enabled by science.

Geography

SUBJECT LEADER: Mr Coole

EXAM BOARD: AQA

SPECIFICATION LINK: <https://www.aqa.org.uk/subjects/geography/gcse/geography-8035/specification>

Why choose Geography?

The study of geography stimulates an interest in and a sense of wonder about places.

It will help you make sense of a complex and changing world – a world that could be very different in the future due to issues today.

Understanding more about our natural and man-made environments and how they can impact on our lives will allow you to develop as a global citizen, able to view issues from a wider perspective.

What you will study in Geography:

Living with the physical environment

- Section A: The challenge of natural hazards
- Section B: The living world
- Section C: Physical landscapes in the UK

Challenges in the human world

- Section A: Urban issues and challenges
- Section B: The changing economic world
- Section C: The challenge of resource management

Geographical Applications

- Section A: Issue evaluation
- Section B: Fieldwork

How you will be assessed in Geography

The course is 100% external exam.

Paper 1 - 35% (1hr 30mins)
Living with the physical environment

Paper 2 - 35% (1hr 30mins)
Challenges in the human world

Paper 3 - 30% (1hr 30mins)
Issue evaluation (a topic booklet is published 12 weeks before the exam)
Geographical Fieldwork skills (both familiar and unfamiliar fieldwork)



Your Future

Skills	Career	Study
Independent research and data collection skills	Conservation	Geography Geology Biology Environmental Sciences Coastal management International Development Law Meteorology Tourism Education
	Cartographer	
Formulate ideas and solve problems using creative thinking	Environmental consultant	
	International development	
Use a wide range of information including cartographic, pictorial and graphical sources and ICT	Urban planning	
	Tourism	
	Surveyor	
Debate moral and ethical issues	Journalism	

ADDITIONAL INFORMATION:

There will be compulsory fieldwork to be completed.

This is NOT coursework. The data collected will be used in the Paper 3 examination.

History

SUBJECT LEADER: Miss Russell

EXAM BOARD: AQA

SPECIFICATION LINK: <https://www.aqa.org.uk/subjects/history/gcse/history-8145/specification>

Why choose
History?

How do you know
who you are unless
you know where
you've come from?

How can you tell
what is going to
happen unless you
know what has
happened before?

History is not just
about the past. It is
about understanding
why we are here, who
we are...and about
where we may go in
the future!

What you will study in History:

The course is split into 4 parts, which are examined in two papers. All parts require extended writing. You will also be examined on your source/interpretation analysis skills.

- Period study: Germany, 1890-1945: Democracy and Dictatorship
- Modern depth study: Conflict and Tension, 1918-1939
- Thematic study: Britain: Medicine and the people, c.1000 to the present day
- British depth study (including a historic environment): Elizabethan England, 1558-1603

How you will be assessed in History

The course is 100% external exam.

Paper 1 - 50% (2hrs)

1A: Period study

1B: Wider World study

Paper 2 - 50% (2 hrs)

2A: Thematic study

2B: British depth study

(including historic environment)



Your Future

Skills	Career	Study
Critical reasoning	Archaeologist	History History of Art Archaeology Politics Communications Law
Analytical skills	Archivist	
Independent research and group learning skills	Education	
	Heritage manager	
Ability to construct an argument and communicate findings in a clear, persuasive manner	Journalism	
	Museum curator	
Capacity to objectively think about an issue	Solicitor/Lawyer	

ADDITIONAL INFORMATION:

“Those who fail to learn from history are condemned to repeat it”

Winston Churchill, 1948: British Prime minister

Spanish

SUBJECT LEADER: Mrs Bishop
EXAM BOARD: Edexcel
SPECIFICATION LINK: [Pearson Edexcel GCSE Spanish \(2024\)](#) | [Pearson qualifications](#)

Why choose Spanish?

Spanish is the second most widely-spoken, native language in the world.

Studying Spanish develops articulation, creativity and academic discipline.

The skills developed through studying Spanish are as valuable and complimentary of other GCSE subjects, as learning the language itself.

What you will study in Spanish:

In Spanish you will study the following themes:

- My personal world
- Lifestyle and wellbeing
- My neighbourhood
- Media and technology
- Studying and my future
- Travel and tourism

As well as developing your confidence, communication and employability skills.

How you will be assessed in Spanish

The course is assessed at either foundation level (Grades 1-5) or higher level (Grades 4-9) in all 4 skills: listening, speaking, reading and writing.

Each skill is worth 25% of your final grade and exams take place at the end of year 11.

Speaking assessments are conducted by your Spanish teacher and students are able to pick a chosen topic for part of the assessment.

Speaking multiple languages improves resilience, problem-solving, multitasking and decision-making. New research indicates that people who speak more than one language process information more easily and efficiently than those who speak a single language.



Your Future

Skills	Career	Study
Communication	Travel and tourism	College 6th form Degree Masters PhD
Problem solving	International business	
Teamwork	Education	
Perseverance	Translation	
Analysis	Business	
Resilience	Marketing	
Creativity	Fashion	

ADDITIONAL INFORMATION:

Learning the language and culture of another European and global language can improve your competitiveness in the job market, earn you more money and give you a new perspective on life through the opening up of social and cultural opportunities. Furthermore, when travelling, often people you meet will speak Spanish, if they do not speak English.

Computer Science

SUBJECT LEADER: Mr Gaskell
EXAM BOARD: OCR
SPECIFICATION LINK: <https://www.ocr.org.uk/qualifications/gcse/computer-science-j277-from-2020/>

Why choose Computer Science?

The world depends on computers. In this GCSE you will learn about how computers work, the networks they use, and how programming can create solutions to everyday problems and future challenges. There are more vacancies than people to fill them. People in computing earn 41% more, on average

What you will study in Computer Science:

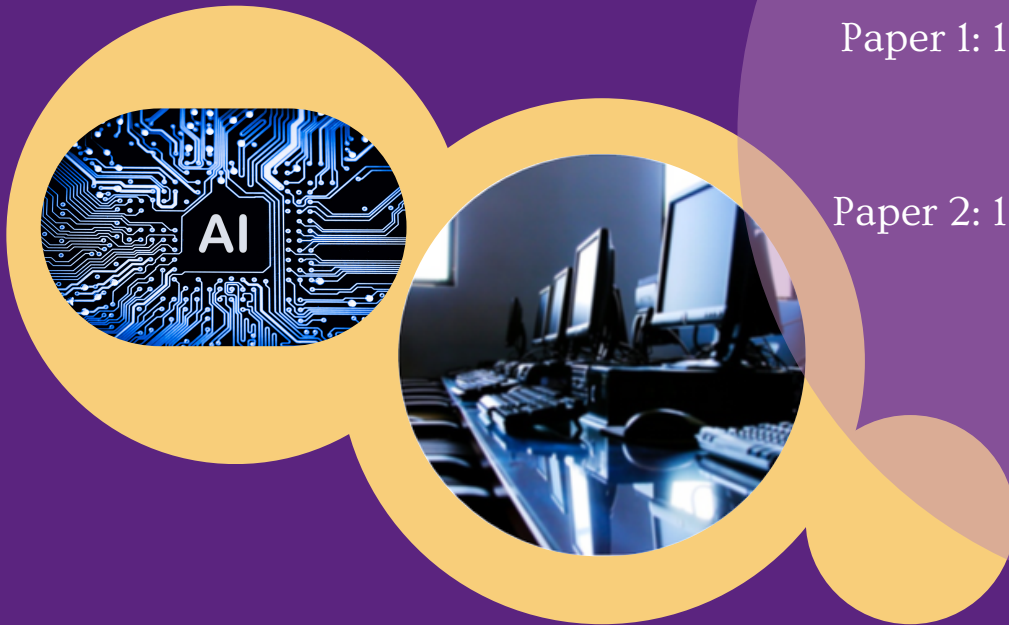
Unit 1

1. Systems architecture
2. Memory and storage
3. Computer networks, connections and protocols
4. Network security
5. Systems Software
6. Ethical, legal, cultural and environmental impacts of digital technology

Unit 2

1. Algorithms
2. Programming fundamentals
3. Producing robust programs
4. Boolean logic
5. Programming language and Integrated Development Environments

How you will be assessed in Computer Science



100% examination

Paper 1: 1 hr 30 mins (50% of grade)

Paper 2: 1 hr 30 mins (50% of grade)

Your Future

Skills	Career	Study
Programming	Software engineer	Level 3 qualification in computer science or information technology, leading to a degree
Complex problem solving	Programmer	
Algorithmic thinking	Systems administrator	
Logical and creative thinking skills	Database administrator	
Breaking down problems effectively	IT Technician	Apprenticeship in computing/IT
	System analyst	

ADDITIONAL INFORMATION:

Maths ability is a significant indicator of success in computer science. With the amount of programming involved, you will have excellent employment chances in this rapidly expanding field if you decide to continue with your studies. Around 80% of jobs require some computing or IT skills.

Art, Craft and Design

SUBJECT LEADER: Mrs Pye
EXAM BOARD: AQA
SPECIFICATION LINK: [GCSE Art and Design 8201](#) | [Specification](#) | [AQA](#)

Why choose Art?

Art GCSE will allow you to develop many transferable skills employers want to see, such as independence, creativity, time-management and the ability to adapt to a process from start to finish.

Art will give you the opportunity to express your individual response to a project. You will develop a greater understanding of the media you have used in KS3, as well as explore new techniques in KS4.



What you will study in Art:

Throughout the course you will explore how Artist's have used media and experiment with your own interpretations inspired by them.

Other inspiration might come from installation art, lens-/light-based media or land art, plus others.

The techniques you could cover include:

- drawing
- painting
- sculpture
- ceramics
- printmaking
- mixed media
- photography and the moving image

How you will be assessed in Art



Assessment

Each component is marked out of 4 Assessment Objectives, each worth 24 marks.

The Assessment Objectives cover:

- Resources, research and analysis.
- Experimentation and refinement.
- Observations, planning and development of ideas.
- The final design inspired by the whole design process.

Component 1: Portfolio of Work (60%)

You will explore 2D and 3D media and build up a variety of skills and confidence.

2 projects will be completed.

Component 2: Externally set task (40%)

The GCSE Exam Paper is issued in January of YR11. You will choose what question to answer. You will have from January to April to develop your design.

Your Future

	Employability	Study
<p>What are creative industries?</p>	<p>The Creative Industries contribute over £123 Billion annually to the UK economy. The sectors growth is notable with a 35% increase from 2010 to 2023 (outperforming the UK economy).</p>	<p>This qualification would help you with study for any creative subject at KS5 / LEVEL 3 and higher, as well access an Apprenticeship within the creative arts sector.</p> <p>Whether or not you can see yourself in a creative career, any Arts course will allow you to work in a practical way. It will also help you appreciate developing a skill for life.</p>

ADDITIONAL INFORMATION:

Did you know, more people work in the creative industries than in the finance industry!

Child Development

SUBJECT LEADER: Mrs Griffiths
EXAM BOARD: OCR
SPECIFICATION LINK: <https://www.ocr.org.uk/qualifications/cambridge-nationals/child-development-level-1-2-j809/>

Why choose Child Development?

Child Development will inspire and equip students with independence and confidence in using skills that are relevant to the childcare sector and more widely. It covers all aspects of child development, from conception to five years, as well as providing safe and nurturing environments.

What you will study in Child Development:

Three units of work:

- You will learn how to create a safe environment for children from birth to five years in childcare settings. You will research and choose equipment that is suitable and safe for use and nutrition and dietary needs (coursework).
- You will learn the developmental norms for children from one to five years. You will understand the importance of creating plans and providing different play activities to support children in their development (coursework).
- Health and well being of children (exam).

How you will be assessed in Child Development

2 x internal assessments
(60 marks each)
60% weighting

1 x external assessment
(70 marks)
40% weighting



Your Future

Skills	Career	Study
Draw together, analyse and critically evaluate information.	Early years teacher/ practitioner	Level 3 BTEC Children's Play, Learning and Development L3 OCR Technical in Health and Social Care
	Neonatal or child's nurse	
Communicate effectively with individuals, groups and organisations.	Primary teacher	
	Child psychologist	
Produce accurate informed decisions.	Teaching assistant	

ADDITIONAL INFORMATION:

Each internal assessment typically requires between 12-14 hours of study.

Dance

SUBJECT LEADER: Miss Hawley
EXAM BOARD: Edexcel (Pearson)
SPECIFICATION LINK: [9781446939628_BTEC_L1L2_AWD_PA_SPEC.pdf](#)

You want to increase your confidence and communication skills in all areas

You enjoy performing

Choose Dance if:

You are interested in different styles of dance

You want the opportunity to develop your performance skills, and choreograph movement for yourself and others

What you will study in Dance:

Component 1 - Exploring the Performing Arts:

In this unit you will develop your understanding of dance by examining practitioners' work and the processes and practices that contribute to a range of dance styles. This unit will help you to understand the requirements of being a dancer across a range of performance genres. You will develop transferrable skills, such as research and communication.

Component 2 - Developing Skills and Techniques:

This unit is about developing your versatility and technique as a dancer. You will be encouraged to develop your physical and interpretive skills to help you become a stronger and more technical dancer. You will explore and develop your dance skills in practical workshops and lessons focusing on two styles of dance and learning specific dance repertoire. You will be encouraged to understand your own strengths, identify areas for your development and, as a result, set targets for your improvement.

Component 3 - Performing to a Brief:

This unit will give you the opportunity to work as part of a group to research, choreograph and develop a dance performance in response to a given brief and stimulus. You will creatively use and apply the skills and techniques learnt on the course to a performance for a selected audience.

How you will be assessed in Dance

Components 1 and 2 of the course are assessed internally and component 3 is assessed externally. In the internally assessed units you will be assessed on both your practical skills and development as well as written work. The written work consists of rehearsal logs and evaluations, a research portfolio and presentations of your findings. You will be recorded and assessed on your practical skills and how your skillset develops over time. Your final performances will also be assessed



In component 3 you will be assessed on how you respond to the given scenario set by the examination board. You will be marked on your rehearsal process, the final performance and the written evidence you create to support this.

Your Future

Skills	Career	Study
Communication	Performer	Level 3 qualification in dance
Confidence	Events management	
Teamwork	Backstage/technical	Degree in performance related subject
Resilience	Arts administrator	
Performance	Fitness instructor	
Physical and interpretive	Dance therapist	Professional dance training
Creativity	Teacher	

ADDITIONAL INFORMATION:

The BTEC Tech Award is the equivalent to 1 GCSE.

Enterprise & Marketing

SUBJECT LEADER: Mr Gaskell

EXAM BOARD: OCR

SPECIFICATION LINK: <https://www.ocr.org.uk/qualifications/cambridge-nationals/enterprise-and-marketing-level-1-2-j837/>

Why choose Enterprise & Marketing?

The world is run by market forces.

94% of Business students get work on graduation.

Salaries are much higher for Business graduates.

What will you study in Enterprise & Marketing?

Business concepts, business planning, market research and business proposals, pitching a business proposal, accounting and finance, product development, customer satisfaction and retention.

How you will be assessed in Enterprise & Marketing



Unit 1: 40% External exam

Unit 2: 30% Coursework assignment

Unit 3: 30% Coursework assignment

Coursework is marked internally and externally moderated

Your Future

Skills	Career	Study
Commercial awareness	Business owner	Level 3 qualification in a business-related subject leading to a degree Apprenticeship
Thinking		
Problem solving	Manager	
Communication		
Creativity	Director	
Self management		
Adaptability	Retail	
Resilience		

ADDITIONAL INFORMATION:

You will create and run your own small business. Through this you will learn about market research, customer needs, planning, finance, promotion, characteristics of businesses, and much more.

Media Studies

SUBJECT LEADER: Mrs Asher
EXAM BOARD: Eduqas
SPECIFICATION LINK: <https://www.eduqas.co.uk/media/x3wbjgp1/eduqas-gcse-media-studies-spec-from-2017-e.pdf>

Why choose Media?

Lessons are fun, with many practical tasks, working both individually and in groups embedding the learning. The media will never go away, so why not study it?

Media is all around us and we use it every single day. Have a mobile and use social media? Enjoy watching films as a hobby? Listen to the news from around the world? Then you are already using the media. If you are interested in the technical aspects of films, TV and music videos and enjoy discussing your opinions on how entertainment is a form of knowledge, then you will enjoy Media Studies.

What you will study in Media:

You will look at a variety of media forms including film, advertising, TV shows, newspapers, radio and music videos. You will analyse the way the media shapes our opinions on the world and how representations are formed. You will analyse how institutions target their audiences for products and the relevance of social contexts to a product's appeal. You will learn practical skills including how to film moving image footage and edit appropriately with sound to create meaning for an audience. Watching a film or TV show will never be the same again!

How you will be assessed in Media

Component 1:
Exploring the media
Exam - 1 hr 30 mins - 40% of qualification

Component 2:
Understanding Media Forms and Products
Exam - 1 hr 30 mins - 30% of qualification

Component 3:
Creating Media Products
NEA Moderated coursework - 30% of qualification



Your Future

Skills	Career	Study
Skills	Journalist	A level Media Studies A level Film Studies Apprenticeship BTEC Level 3 Media BA Hons Degree
Teamwork	Games developer	
Analytical analysis	Producer	
Creativity	Script writer	
Originality	Film or TV director	
Practical camera skills	Blogger	

ADDITIONAL INFORMATION:

Media studies can assist with your knowledge of English and is an exciting way to help your understanding of the world around us. Trips are a bonus of media studies!

Performing Arts

SUBJECT LEADER: Miss Hawley
EXAM BOARD: Edexcel (Pearson)
SPECIFICATION LINK: [9781446939628_BTEC_L1L2_AWD_PA_SPEC.pdf](#)

You want to increase your confidence and communication skills in all areas

You enjoy acting, dancing and singing

You enjoy performing

Why choose Performing Arts?

You want the opportunity to develop your performance skills

You want to perform musicals from the West End

What you will study in Performing Arts:

Component 1 - Exploring the Performing Arts:

In this unit you will develop your understanding of the performing arts by examining practitioners' work and the processes and practices that contribute to a range of performance styles. This unit will help you to understand the requirements of being a performer across a range of performance genres. You will develop transferrable skills, such as research and communication.

Component 2 - Developing Skills and Techniques:

This highly practical unit will give you a taste of the world of the musical. You will take part in practical workshops, which will improve your technical and interpretive skills in each discipline. You will then bring these skills together to work on repertoire from a chosen musical that you will rehearse and perform in front of an audience.

Component 3 - Performing to a Brief:

This unit will give you the opportunity to work as part of a group to research, create and develop a performance in response to a given brief and stimulus. You will creatively use and apply the skills and techniques learnt on the course to a performance for a selected audience of your choice.

You will need to demonstrate your technical ability in each discipline and will have opportunities to perform each skill equally. You will be encouraged to understand your own strengths, identify areas for your development and, as a result, set targets for your improvement. This unit is assessed internally.

How you will be assessed in Performing Arts

Components 1 and 2 of the course are assessed internally and component 3 is assessed externally. In the internally assessed units you will be assessed on both your practical skills and development as well as written work. The written work consists of rehearsal logs and evaluations, a research portfolio and presentations of your findings. You will be recorded and assessed on your practical skills in all 3 areas (singing, dancing and acting) and how your skillset develops over time. Your final performances will also be assessed.



In component 3 you will be assessed on how you respond to the given scenario set by the examination board. You will be marked on your rehearsal process, the final performance and the written evidence you create to support this.

Your Future

Skills	Career	Study
Communication	Performer	Level 3 qualification in Performing Arts
Confidence	Events management	
Teamwork	Backstage/technical	Degree in performance related subject
Resilience	Arts administrator	
Performance	Tv/Radio production	
Physical and interpretive	Make up artist	Professional performance training
Creativity	Stage acting	

ADDITIONAL INFORMATION:

The BTEC Tech Award is the equivalent to 1 GCSE.

You will need to demonstrate your technical ability in each discipline and will have opportunities to perform each skill equally. You will be encouraged to understand your own strengths, identify areas for your development and, as a result, set targets for your improvement.

Religious Studies

SUBJECT LEADER: Mr Arif
EXAM BOARD: Edexcel B (2016)
SPECIFICATION LINK: <https://qualifications.pearson.com/en/qualifications/edexcel-gcses/religious-studies-b-2016.html>

Why choose Religious Studies?

The beauty of this subject is that answers are very rarely 'right' or 'wrong' but that students are rewarded for developing skills in arguing, debating and justifying their viewpoints in an academic, respectful and emotionally intelligent way.

Religious Studies is a lively course for students to reflect on essential components of what it means to be human and to live in society. Students are encouraged to engage with both religious and non-religious viewpoints to come to their own critical conclusions. RS is not about expressing a certain view as 'true' but developing a spirit of enquiry from which students can explore a wealth of different world views and form their own opinion on philosophical, religious and ethical matters.

What you will study in Religious Studies:

Paper 1:

- Christian beliefs
- Christian practices
- Marriage and family
- Life and death

Paper 2:

- Muslim beliefs
- Muslim practices
- Crime and punishment
- War and peace

Punishments given around the world

Crime and its causes

Equality / social justice

Life after death

Atheism and no religious beliefs

Weapons of mass destruction

Gender equality

How do we know if something is 'good' or 'bad'?

Marriage

Abortion & euthanasia

How you will be assessed in Religious Studies

Assessment – Edexcel Route B

Paper 1 - Religion and Ethics (studied from the Christian/non-religious perspective). 50% of final grade.

Paper 2 – Religion, Peace and Conflict (studies from the Muslim/non-religious perspective).
50% of final grade.



Your Future

Skills	Career	Study
Critical thinking	Aid worker	Philosophy Religion Law Ethics Politics Economics
Evaluation	Barrister	
Research and presentation	Paralegal	
Confidence	Teaching	
Decision making / independent	Activist	
Physical and interpretive	Journalism	
Analytical skills		

ADDITIONAL INFORMATION:

“A high-quality sequential religious education (RE) programme is essential...to teach a full curriculum that prepares pupils for the opportunities, responsibilities and experiences of life in modern Britain. “

(Religious Education in Church of England Schools; A Statement of Entitlement, 2019)

Sociology

SUBJECT LEADER:

Mr Gaskell

EXAM BOARD:

OCR

SPECIFICATION LINK:

<https://www.ocr.org.uk/qualifications/cambridge-nationals/enterprise-and-marketing-level-1-2-j837/>

Why choose Sociology?

It will give you the opportunity to develop your analytical, communication and evaluation skills due to the broad topics that are covered and the depth at which those topics are covered.

GCSE Sociology aims to broaden students' minds, helping them to see their world from different perspectives and in new and thought-provoking ways.

Sociology can lead to careers within sectors such as criminal justice, welfare services and government etc.

What you will study in Sociology:

Paper 1:

- The sociology of families
- The sociology of education
- Relevant areas of social theory and methodology

Paper 2:

- The sociology of crime and deviance
- The sociology of social stratification
- Relevant areas of social theory and methodology

How you will be assessed in Sociology

100% examination

Paper 1: 1 hr 45 mins
(50% of grade)

Paper 2: 1 hr 45 mins
(50% of grade)

Sociology is about the study of society. It relates to how individuals and groups interact with one another and how these interactions impact on who they become.



Your Future

Skills	Career	Study
Communication	Police officer	Families Education Research methods Social Stratification Crime and Deviance
Analytical	Teacher	
Evaluation	Social research	
Research	Counsellor	
	Social worker	
	Family support worker	

ADDITIONAL INFORMATION:

Students will gain theoretical views throughout each unit. Theories such as:

- Feminism
- Marxism
- Functionalism

Sport Science

SUBJECT LEADER: Miss Henderson
EXAM BOARD: OCR
SPECIFICATION LINK: <https://www.ocr.org.uk/qualifications/cambridge-nationals/sport-science-level-1-2-j828/>

You have a keen interest in anatomy and physiology

You enjoy taking part in physical activity

You are interested in learning more about fitness

Why choose Sport Science?

You want a qualification that will open up a wide range of careers in many different sectors such as medicine, sport, journalism, leisure industry and more...

This qualification involves a lot of academic study; you will be required to complete coursework and sit a written exam. The opportunity for practical will come within units with practical elements such as fitness testing and skills testing.

What you will study in Sports Science:

In this pathway you will have the opportunity to study key areas of sport science including anatomy and physiology linked to fitness, health, injury and performance; the science of training and application of training principles, and psychology in sport and sports performance.

Mandatory units:

- R181 - Applying principles of training: fitness and how it affects skill performance (C/Work)
- R180 - Reducing the risk of injuries and dealing with common medical conditions. (1 Hour Exam)

Optional units:

- R182 - The body's response to physical activity and how technology informs this
 - R183 - Nutrition and sports performance
- (Only one of the optional units will be chosen)

How you will be assessed in Sport Science

The course assessment is as follows:

Unit R180: Reducing the risk of sports injuries and dealing with common medical conditions.

Unit R181: Applying the principles of training: fitness and how it affects skill performance.

Unit R183: Nutrition and sports performance.



Units R181 and R183 are both coursework units, with elements of practical; R180 is an examined unit, which is completed at the end of the course like most other GCSE subjects.

Your Future

Skills	Career	Study
Academic style writing	Physiotherapist	Level 3 qualification in sport
Academic Referencing	Coach	
Teamwork	Teacher of PE	
Effective communication	Sports psychologist	University degree in sport science
Research skills	Medical role	
Physiological Testing	Sport Scientist	
Data Analysis	Personal trainer	

ADDITIONAL INFORMATION:
OCR Sport Science is equivalent to 1 GCSE.